


MELBOURNE CBD | ABODE 318

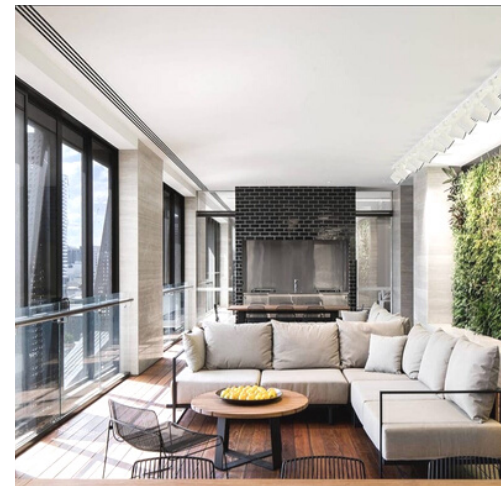
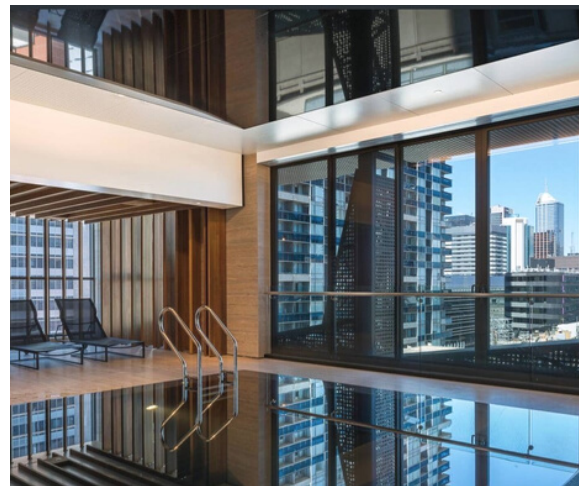
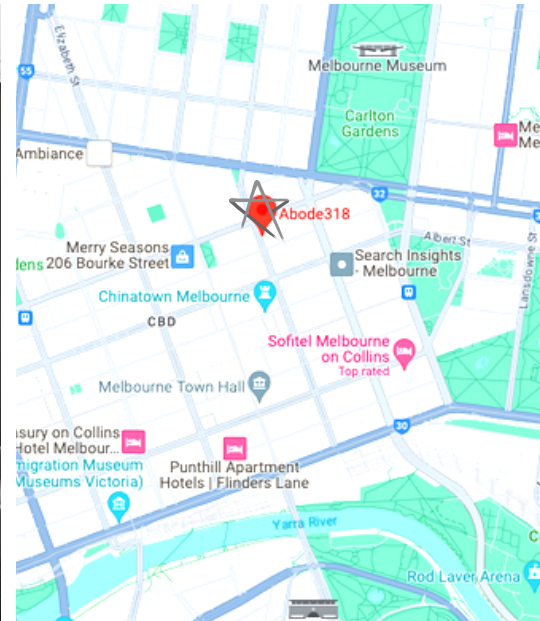
318 Russell St, Melbourne, VIC, 3000



 1 Bedroom Apartments

 55 s qm

 Unlimited WiFi



ABOUT ABODE 318

Abode 318 is located in the heart of Melbourne CBD, opposite the State Library and QV Shopping precinct, within walking distance to RMIT University, University of Melbourne, Chinatown, Carlton Gardens, and the city's major transport hubs including Melbourne Central Station and Swanston Street Trams.

Spacious accommodation for corporate travellers with resort-style facilities that include an indoor heated swimming pool, sauna and steam room, BBQ terrace & lounge area.

*Photos are indicative of a typical apartment in the building. The actual apartment booked may not be identical.

FEATURES

- Secure building, intercom and lift access
- 24/7 personal meet & greet plus on-call management support
- Unlimited, reliable WiFi connection
- Weekly service clean with fresh sheets & towels
- Ducted Air conditioning/heating
- Fully equipped kitchen, gas cooking and full-sized fridge
- Internal laundry with washing machine & dryer
- Built-in wardrobes with plenty of hanging space
- No bonds to pay, and no utility usage caps.

CONTACT US

 astraapartments.com.au

 melcbd@astraapartments.com.au

 +61 3 8573 0980